

# Blood Pressure Cuffs



## Blood Pressure Cuffs from GBUK Healthcare

Measuring and monitoring blood pressure is a vital element in accurate diagnosis and care management.

From the simplest manual aneroid sphygmomanometer, to the most sophisticated oscillometric device, using the correct limb cuff is essential for consistently accurate and reliable blood pressure measurement.

Bio-Cuff™ and Neo-Cuff™ from GBUK Healthcare provide the total BP cuff solution for any clinical setting.

Exacting quality, precision manufacture, effective performance. BP cuffs from GBUK Healthcare.



**BS EN 80369-5:2016  
BAYONET CONNECTOR**

# BS EN 80369-5:2016 Limb Cuff Inflation Devices

On-site upgrade and conversion to  
BS EN 80369-5:2016 BP cuff connectors

GBUK Healthcare provides a systematic on-site exchange protocol to ensure that blood pressure monitoring devices and all associated limb cuffs are fitted with connectors that comply with BS EN 80369-5:2016.

Working within clinical departments, and managing the conversions in co-operation with procurement and technical support services, specially-trained GBUK Healthcare product specialists supply and fit BS EN 80369-5:2016 connectors to the complete patient blood pressure measurement device inventory, automatic and manual devices.

Converting a BP measuring device to accept BS EN 80369-5:2016 cuff connectors takes only a few moments and is carried out in-situ without disruption to the work of the user department. Every new connection is individually tested.

Convert your Trust to Bio-Cuff & GBUK Healthcare will upgrade your complete BP device inventory at no additional cost.



## Neo-Cuff™

- Neonatal BP cuffs
- Single patient use
- Dual and single hose options
- Luer push-fit connectors
- Colour-coded in sizes 1 - 5
- Decorated with cheery nursery characters

### Neonatal Blood Pressure Cuffs



## Bio-Cuff™

- Reusable BP cuffs
- Colour-coded in 6 sizes: Infant, Child, Small Adult, Adult, Large Adult & Thigh
- Dual and single hose options
- Complete range of connectors

### Reusable Blood Pressure Cuffs



## Bio-Cuff™

- Single patient use BP cuffs
- Colour-coded in 6 sizes: Infant, Child, Small Adult, Adult, Large Adult & Thigh
- Dual and single hose options
- Comprehensive range of connectors

### Disposable Blood Pressure Cuffs



# Neo-Cuff

## Single Patient Use BP Cuffs

A complete range of five single patient use neonatal cuffs in single and dual hose options. Colour-coded for easy identification, all Neo-Cuff designs feature super-soft material with gently rounded corners. Every Neo-Cuff has clear artery and range marks, with advisory indicators to show when a smaller or larger Neo-Cuff would be the more appropriate choice.

Each Neo-Cuff is brightly decorated with nursery characters to ease parental anxiety at the sight of clinical equipment.

Range markings also include advisory indicators to use a smaller or larger cuff



Clear and comprehensive markings show the cuff size, artery position and cuff range.

Soft materials and rounded corners for comfort - protecting delicate and vulnerable young skin.

**Neo-Cuff** is colour-coded according to cuff size.



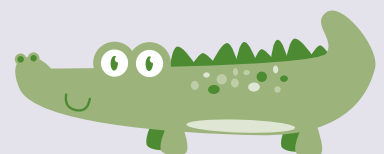
**Size 1**

Neonatal, 3-6 cm



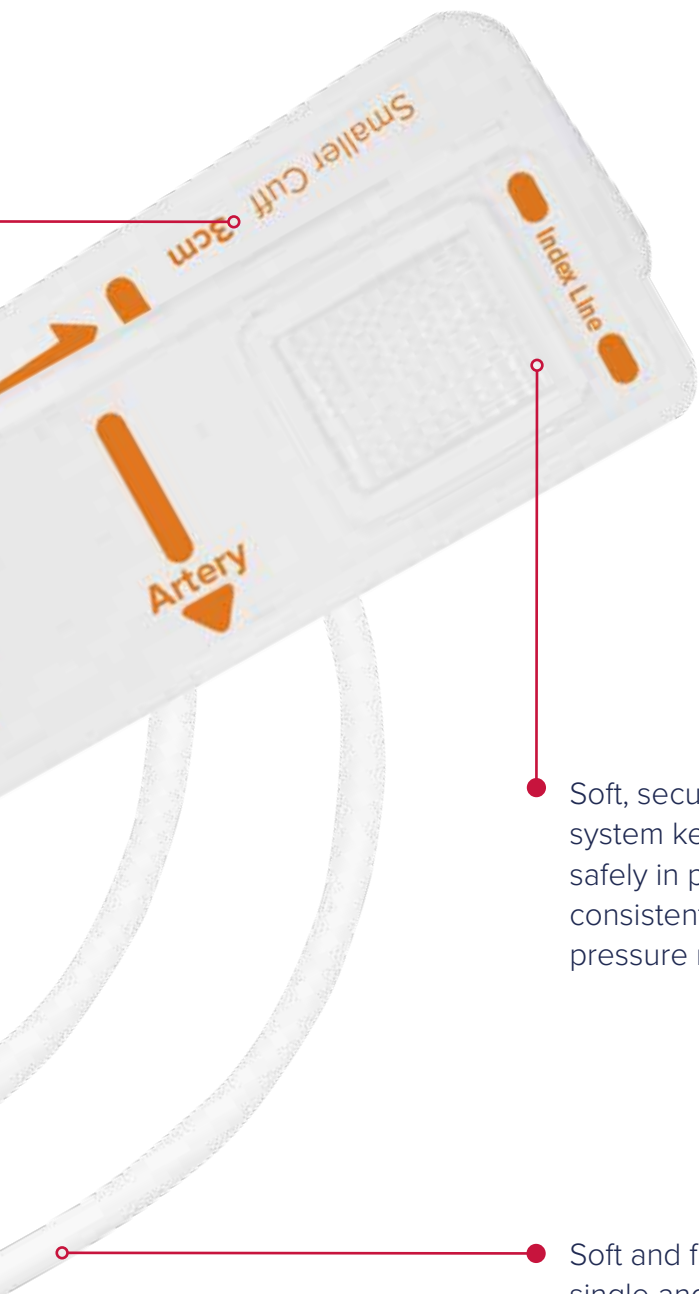
**Size 2**

Neonatal, 4-8 cm



**Size 3**

Neonatal, 6-11 cm



## BS EN 80369-5:2016

Improving patient safety in medical fluid and gas delivery circuit connections.

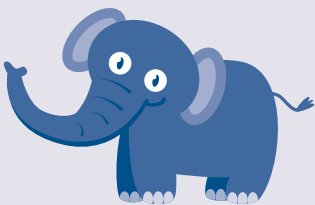
GBUK Healthcare offer a complete protocol for the upgrade of BP cuff connections, extending the service life of existing inventory and preparing the way for the phased introduction of the new BS EN 80369-5:2016 standard.

Contact your local Area Business Manager for more details about the GBUK Healthcare limb cuff conversion protocol.

Soft, secure hook-and-loop closure system keeps the Neo-Cuff safely in place. Essential for consistent and accurate blood pressure measurement.

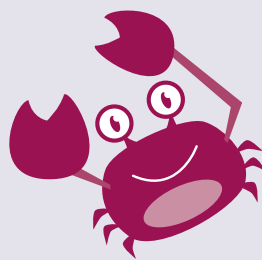
Soft and flexible hoses in both single and dual hose configurations.

Precise luer slip connectors.



**Size 4**

Neonatal, 7-13 cm



**Size 5**

Neonatal, 8-15 cm

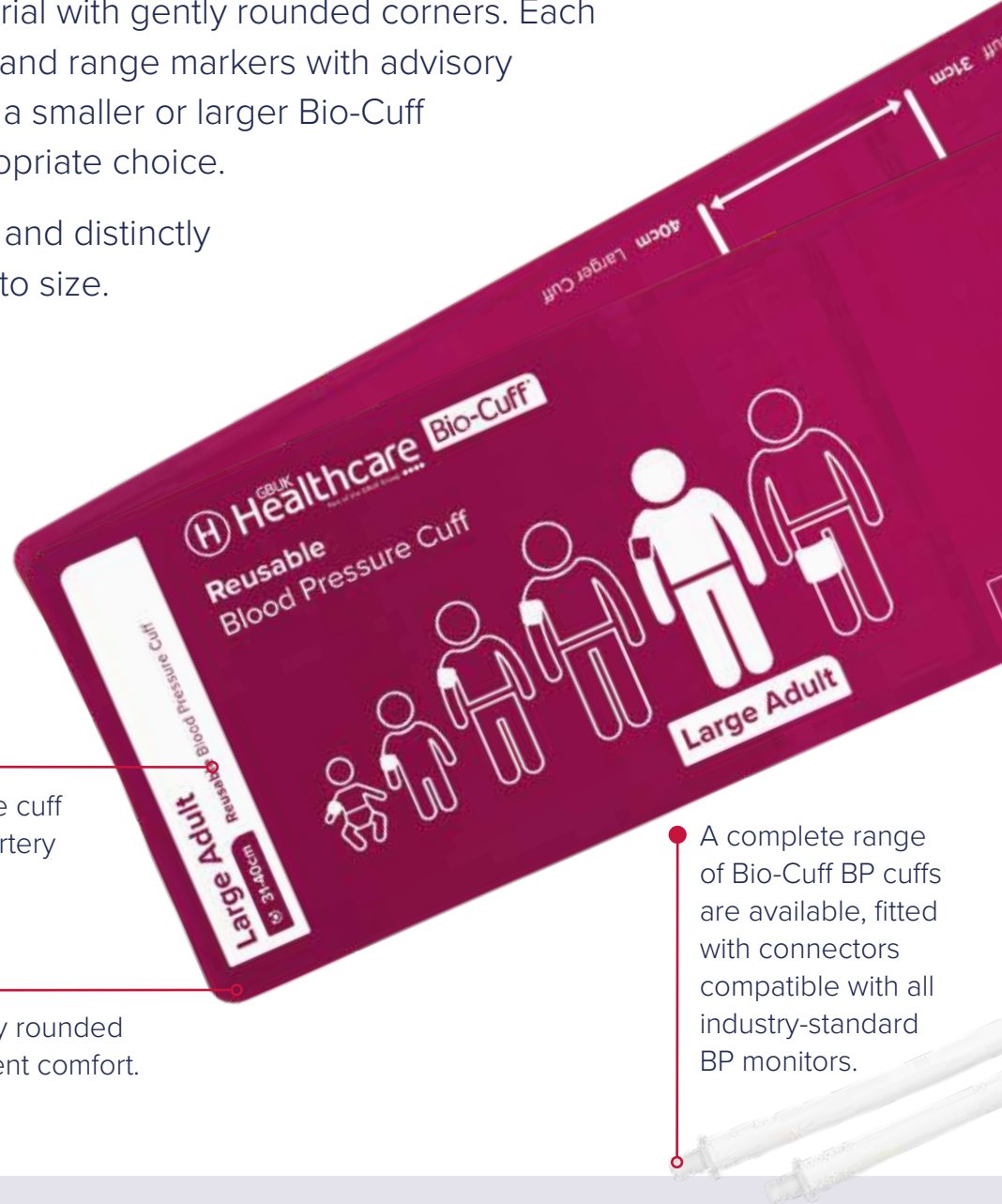
**Latex Free**

# Bio-Cuff

## Reusable BP Cuffs

A complete range of reusable cuffs in single and dual hose options. Colour-coded for easy identification, all Bio-Cuff designs feature durable easy-clean material with gently rounded corners. Each Bio-Cuff has clear artery and range markers with advisory indicators to show when a smaller or larger Bio-Cuff would be the more appropriate choice.

Every Bio-Cuff is brightly and distinctly colour-coded according to size.



Clear bright markings show the cuff size and limb circumference, artery position and cuff range.

Super-soft materials and gently rounded corners ensure maximum patient comfort.

A complete range of Bio-Cuff BP cuffs are available, fitted with connectors compatible with all industry-standard BP monitors.

**Bio-Cuff** is colour-coded according to cuff size.



**Infant**

10 - 15cm



**Child**

12 - 19cm



**Small Adult**

17 - 25cm



**Adult**

23 - 33cm



Range markers include advisory indicators to use a smaller or larger cuff.

Artery

- Dual feature hook-and-loop:
- Reliable and secure on inflation
  - Easy peel opening

Soft and flexible hoses in both single and dual hose configurations.



**Large Adult**  
31 - 40cm



**Thigh**  
38 - 50cm

## BS EN 80369-5:2016








Improving patient safety in medical fluid and gas delivery circuit connections.

GBUK Healthcare offer a complete protocol for the upgrade of BP cuff connections, extending the service life of existing inventory and preparing the way for the phased introduction of the new BS EN 80369-5:2016 standard.

Contact your local Area Business Manager for more details about the GBUK Healthcare limb cuff conversion protocol.

### BP Cuff Connectors

GBUK Healthcare Bio-Cuff reusable BP cuffs are available pre-fitted with a range of industry-standard connectors.

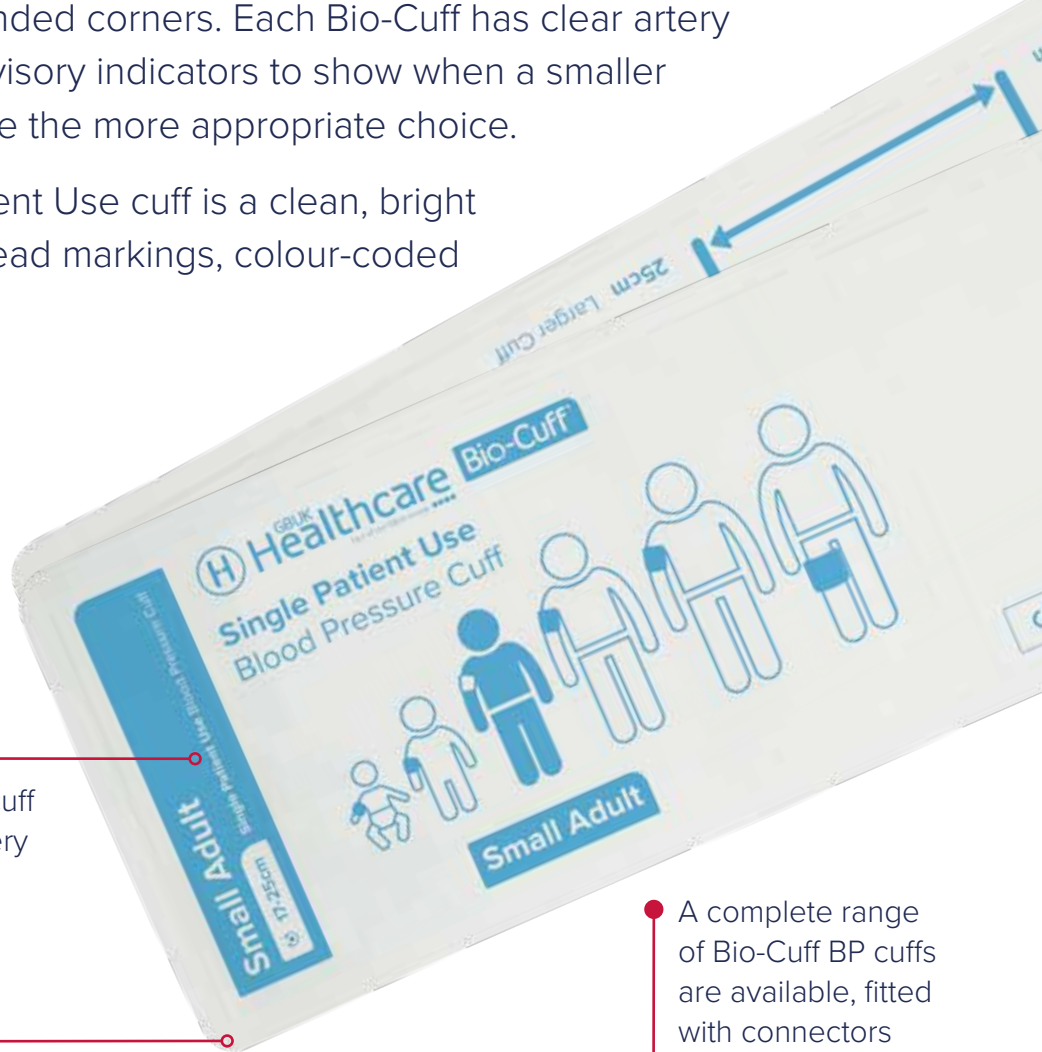
	<b>Bayonet</b> Single Hose
	<b>Bayonet</b> Dual Hose
	<b>Male Screw</b> Single Hose
	<b>Male Screw</b> Dual Hose
	<b>Mated Subminiature</b> Dual Hose
	<b>Female Subminiature</b> Single Hose
	<b>Female Subminiature</b> Dual Hose

# Bio-Cuff

## Single Patient Use BP Cuffs

A complete range of six single patient use cuffs in single and dual hose options. Colour-coded for easy identification, all Bio-Cuff designs feature soft-feel material with rounded corners. Each Bio-Cuff has clear artery and range marks, with advisory indicators to show when a smaller or larger Bio-Cuff would be the more appropriate choice.

Every Bio-Cuff Single Patient Use cuff is a clean, bright white with large easy-to-read markings, colour-coded according to size.



Clear bright markings show the cuff size and limb circumference, artery position and cuff range.

Super-soft materials and gently rounded corners ensure maximum patient comfort.

A complete range of Bio-Cuff BP cuffs are available, fitted with connectors compatible with all industry-standard BP monitors.

**Bio-Cuff** is colour-coded according to cuff size.



**Infant**

10 - 15cm



**Child**

12 - 19cm



**Small Adult**

17 - 25cm



**Adult**

23 - 33cm



Range markers include advisory indicators to use a smaller or larger cuff.



Dual feature hook-and-loop:

- Reliable and secure on inflation
- Easy peel opening

Soft and flexible hoses in both single and dual hose configurations.



### Large Adult

31 - 40cm



### Thigh

38 - 50cm

## BS EN 80369-5:2016

Improving patient safety in medical fluid and gas delivery circuit connections.

GBUK Healthcare offer a complete protocol for the upgrade of BP cuff connections, extending the service life of existing inventory and preparing the way for the phased introduction of the new BS EN 80369-5:2016 standard.

Contact your local Area Business Manager for more details about the GBUK Healthcare limb cuff conversion protocol.

## BP Cuff Connectors

GBUK Healthcare Bio-Cuff reusable BP cuffs are available pre-fitted with a range of industry-standard connectors.



**Bayonet**  
Single Hose



**Bayonet**  
Dual Hose



**Male Screw**  
Single Hose



**Male Screw**  
Dual Hose



**Mated Subminiature**  
Dual Hose



**Female Subminiature**  
Single Hose



**Female Subminiature**  
Dual Hose

## Neo-Cuff



<b>Neonatal Size 1</b> 3-6 cm	NC-SP-01-L1	NC-SP-01-L2
<b>Neonatal Size 2</b> 4-8 cm	NC-SP-02-L1	NC-SP-02-L2
<b>Neonatal Size 3</b> 6-11 cm	NC-SP-03-L1	NC-SP-03-L2
<b>Neonatal Size 4</b> 7-13 cm	NC-SP-04-L1	NC-SP-04-L2
<b>Neonatal Size 5</b> 8-15 cm	NC-SP-05-L1	NC-SP-05-L2

## Bio-Cuff Reusable



<b>Infant</b> 10 - 15cm	BC-R-01-B1	BC-R-01-B2	BC-R-01-S1	BC-R-01-S2	BC-R-01-M2	BC-R-01-F1	BC-R-01-F2
<b>Child</b> 12 - 19cm	BC-R-02-B1	BC-R-02-B2	BC-R-02-S1	BC-R-02-S2	BC-R-02-M2	BC-R-02-F1	BC-R-02-F2
<b>Small Adult</b> 17 - 25cm	BC-R-03-B1	BC-R-03-B2	BC-R-03-S1	BC-R-03-S2	BC-R-03-M2	BC-R-03-F1	BC-R-03-F2
<b>Adult</b> 23 - 33cm	BC-R-04-B1	BC-R-04-B2	BC-R-04-S1	BC-R-04-S2	BC-R-04-M2	BC-R-04-F1	BC-R-04-F2
<b>Large Adult</b> 31 - 40cm	BC-R-05-B1	BC-R-05-B2	BC-R-05-S1	BC-R-05-S2	BC-R-05-M2	BC-R-05-F1	BC-R-05-F2
<b>Thigh</b> 38 - 50cm	BC-R-06-B1	BC-R-06-B2	BC-R-06-S1	BC-R-06-S2	BC-R-06-M2	BC-R-06-F1	BC-R-06-F2


## Bio-Cuff Single Patient Use



<b>Infant</b> 10 - 15cm	BC-SP-01-B1	BC-SP-01-B2	BC-SP-01-S1	BC-SP-01-S2	BC-SP-01-M2	BC-SP-01-F1	BC-SP-01-F2
<b>Child</b> 12 - 19cm	BC-SP-02-B1	BC-SP-02-B2	BC-SP-02-S1	BC-SP-02-S2	BC-SP-02-M2	BC-SP-02-F1	BC-SP-02-F2
<b>Small Adult</b> 17 - 25cm	BC-SP-03-B1	BC-SP-03-B2	BC-SP-03-S1	BC-SP-03-S2	BC-SP-03-M2	BC-SP-03-F1	BC-SP-03-F2
<b>Adult</b> 23 - 33cm	BC-SP-04-B1	BC-SP-04-B2	BC-SP-04-S1	BC-SP-04-S2	BC-SP-04-M2	BC-SP-04-F1	BC-SP-04-F2
<b>Large Adult</b> 31 - 40cm	BC-SP-05-B1	BC-SP-05-B2	BC-SP-05-S1	BC-SP-05-S2	BC-SP-05-M2	BC-SP-05-F1	BC-SP-05-F2
<b>Thigh</b> 38 - 50cm	BC-SP-06-B1	BC-SP-06-B2	BC-SP-06-S1	BC-SP-06-S2	BC-SP-06-M2	BC-SP-06-F1	BC-SP-06-F2

### How to order?

 [info@gbukhealthcare.com](mailto:info@gbukhealthcare.com)

 **+44 (0) 1757 288 587**  
Lines are open Monday to Friday 8:30am - 5:30pm

 **NHS Supply Chain**  
Search with our product codes



GBUK Group award-winning specialist companies are expert in the provision of enteral feeding, critical care and patient moving and handling products and technologies. GBUK Group companies are suppliers to every UK NHS Trust and to a rapidly expanding Export customer base.

[www.gbukgroup.com](http://www.gbukgroup.com)



[www.gbukhealthcare.com](http://www.gbukhealthcare.com)



**GBUK Healthcare**  
Woodland House  
Blackwood Hall Business Park  
North Duffield, Selby  
North Yorkshire YO8 5DD

T +44 (0) 1757 288 587  
E [info@gbukhealthcare.com](mailto:info@gbukhealthcare.com)